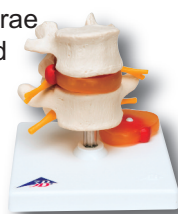


anatomical models



lumbar spinal column with prolapsed intervertebral disc

Natural casts of L4 and L5 lumbar vertebrae with paired spinal nerves, spinal cord and two interchangeable intervertebral discs. Discs illustrate either central or dorsolateral prolapse. Dissects into 5 parts. On stand, removable. 5.1"; 0.6 lb



12-4576 lumbar spinal column 75.00

Consists of atlas, axis, another cervical vertebra, two thoracic vertebrae with intervertebral discs and one lumbar vertebra. Loosely threaded on nylon. On stand, removable. 8.7"; 1 lb

12-4593 6 Mounted Vertebrae 97.50
12-4594 5 Mounted Vertebrae 62.50



femoral fracture and hip osteoarthritis

Model shows the right hip joint of an elderly person in half natural size. In addition to the external anatomy of the hip joint, a frontal section through the femoral neck is shown in relief on the base. Shows the femoral fractures that occur most commonly in practice as well as typical wear and tear symptoms of the hip joint (coxarthrosis or hip osteoarthritis). 5.5" x 3.9" x 8.7"; 1 lb



12-4577 femoral fracture & hip osteoarthritis 100.00

sectional knee joint model, 3-part

Demonstrate various disorders of the human knee joint (articulation genus) and their respective therapies in a graphic way. Shows a natural-sized, healthy right knee joint in upright position, including parts of the femur, tibia and fibula as well as the ligament system and the patella with part of the femoral tendon. The patella, attached tendon and the front half of the model (which is frontally sectioned) can be detached to reveal the internal structures. Mounted on base. 4.7" x 4.7" x 9.4"; 1 lb



12-4806 knee joint model 167.50

lumbar vertebrae, flexibly mounted

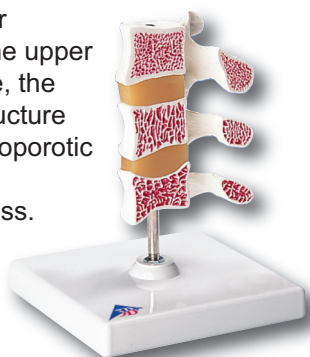
Flexibly-mounted with spinal nerves and dura mater of spinal cord. 4.3"; 0.33 lb

12-4595 2 vertebrae 40.00
with prolapsed disc
12-4596 3 vertebrae 45.00



deluxe osteoporosis model (3 vertebrae)

Consists of 3 medially-divided lumbar vertebrae with intervertebral discs. The upper section shows healthy bone structure, the middle section osteoporotic bone structure and the lower section advanced osteoporotic bone structure with flattened plates, deformation and decreased bone mass. For detailed anatomical study the vertebrae can be removed from the stand. 6.3"; 0.55 lb

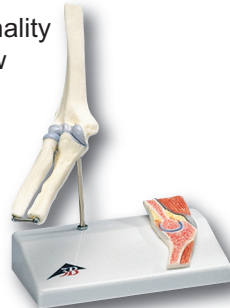


12-4807 osteoporosis model 75.00

mini elbow joint with cross section

Half of the natural size but all of the functionality of larger elbow joint models. Uses the elbow joint cross-section mounted on the base to explain what is happening from "within" the elbow joint. 6.3" x 4.7" x 7.9"; 0.44 lb

12-4520 elbow joint 60.00



hand and foot skeleton with ligaments and muscles

Features bones, muscles, tendons, ligaments, nerves, arteries and veins of the hand, lower forearm and foot.

12-4522 hand skeleton, 4-part, 13" x 5" x 5"; 1 lb 395.00
12-4524 foot skeleton, 6-part, 9" x 7" x 12"; 2 lb 395.00



hand and foot skeletons with ligaments

All the anatomically important ligaments and tendons, large and small, are shown on these two detailed models. Hand includes the interosseous membrane between the radius and ulna and removable flexor retinaculum. Foot includes the Achilles and peroneus longus tendons of the ankle.

12-4521 hand skeleton, 12" x 6" x 4"; 1 lb 272.50
12-4523 foot skeleton, 9" x 7" x 12"; 1 lb 272.50

