

modular fine & gross motor therapy activities

- improve fine and gross motor skills
- activities mimic items used on a daily basis
- for those with functional limitations of hands, fingers or wrists
- improve movement, ROM and quality of life by reinforcing independent day-to-day activities
- perfect for OT, hand therapy and those recovering from stroke or traumatic brain injury

wall panel

- panel holds up to 4 activities
- easily reposition and alternate activity boards
- hardware included
- 15½"W x 1½"D x 34"H

10-7000 wall panel 512.50



tilt frame attachment

- frame tilts to any angle between 0-90°
- fits into wall panel
- holds any activity board
- 10½"L x 18½"W x 6"H

10-7010 tilt frame attachment 347.50



shown with shoe and boot lace board

spiral maze

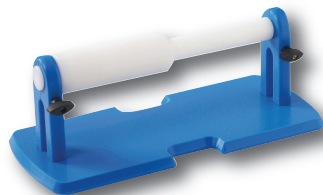
- exercise both prone and supine hand movements



10-7020 spiral maze 215.00

twisting bar

- improve joint function of hands and wrists



10-7021 twisting bar 347.50

adjustable finger ladder

- pivoting ladder allows use from all directions



10-7022 finger ladder 232.50

latch & knob

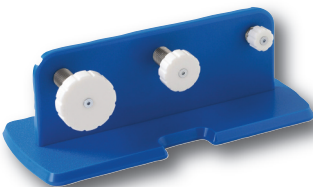
- latch requires fine motor grip
- knob requires ability to grip and rotate



10-7023 latch & knob 215.00

rotation knobs

- 3 sizes of knobs require left and right action to tighten



10-7024 rotation knobs 347.50

shoe & boot laces

- hook or thread laces and practice knot/bow tying



10-7025 shoe & boot laces 297.50

buttons & snaps

- contains 4 snaps and 4 buttons
- snaps require force strength



10-7026 buttons & snaps 265.00

buckles & zipper

- eye-hand coordination is needed to manipulate plastic locking buckle and work the zipper



10-7027 buckles & zipper 215.00